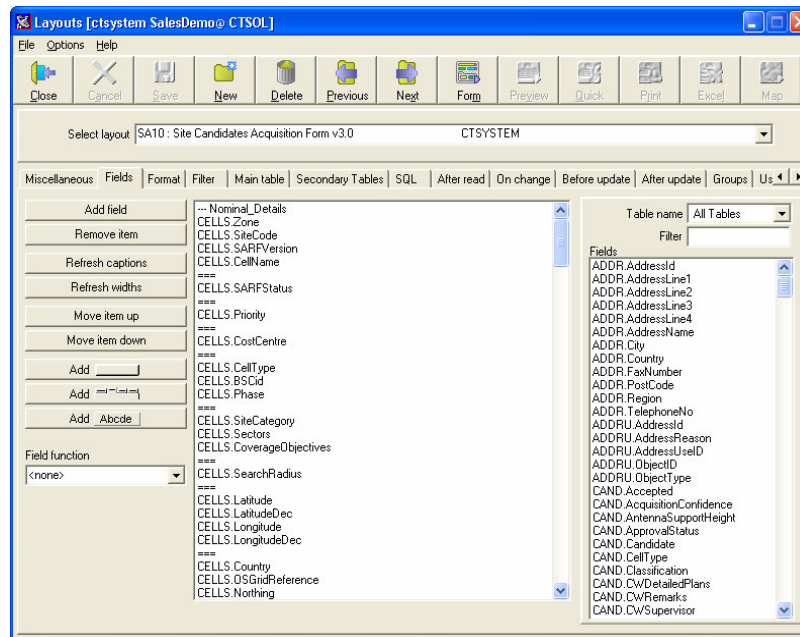


Form Creation and Maintenance

- Forms can be built to accommodate several Tables and many Fields.
- Security rules can be applied by Form or Field as required.
- Bilingual Field descriptions and headings can be built.
- Business Rules can be applied by Form and Field, before and after the data is read or updated, and even while it is being changed.
- User Menus can be created and actions can be attached to buttons on the Form.
- Forms can be designed for Windows or Web and, in many cases, be designed for both.



Security Access

- CellTracker's extensive security model ensures that users have appropriate access to the CellTracker database.

Scripting and Business Rules

- Business Rules, using the CellTracker Scripting Language, can be applied to data before being read into the Form, as it is updated, and before the Form is closed.
- The CellTracker Scripting Language provides nearly 200 functions, which support Data Manipulation, Form Navigation, Interfaces, and Technical and Engineering processes.

Interfaces with other applications

- The CellTracker Development Suite provides the tools and techniques to exchange data with external software programmes. Data interchange can use Batch (e.g. test files), Database Links (e.g. Oracle Tables) and API calls (e.g. using COM). Together, these offer an extensive set of tools to ensure that CellTracker can co-exist with a wide range of external software applications such as Financial Systems, Radio Planning Tools, Transmission and Network Planning Systems and MS Office products.